

05/09/2018



Innovation Teaching School



Autumn Newsletter 2018

Welcome to the first of many updates from Innovation Teaching School

We are an alliance of Mainstream and Special Schools:

Brooklands

Bushy Leaze Early Years

Centre

Fleet Infant School

Gosden House

Henry Tyndale

Kennel Lane

Limington House

Manor Mead

Moss Lane

Pond Meadow

Portesbery

Ridgeway

St Bartholomews

St Marys

St Polycarps

The Abbey

Walton Leigh

Weydon

Woodlands.



ITT

We are supporting four trainee teachers this year, they have started the year with one day at the University of Chichester and are now in their respective classes getting to know the students. Professional Studies start on Monday 10th September. We wish them all luck with their very busy year ahead.

CPD Training Opportunities

CPD Training opportunities for NQT - NQT plus 2 this term

24.09.18 An Introduction to Brain Development - **half day** - £50

29.10.18 Assessment in a special school – **half day** - £50

05.11.18 Behaviour Training - **all day** (lunch included) - £100

19.11.18 Lesson Observation and Differentiation - **half day** - £50

26.11.18 The 7 Aspects of Engagement - **half day** - £50

03.12.18 Sensory Stories and Literature - **half day** - £50

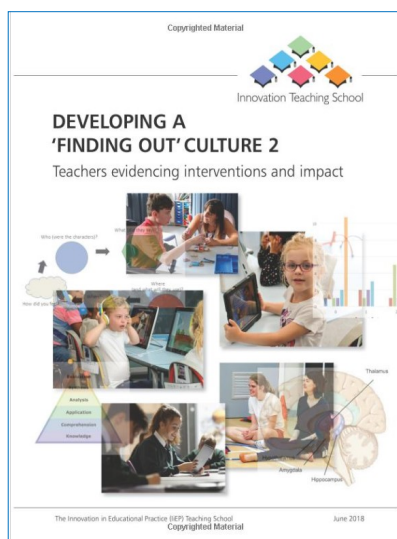
17.12.18 PMLD and Complex Needs - **half day** - £50

Places are limited to 10 to allow for collaborative working and interaction, so if you have a teacher who may be interested please get in touch quickly.

Research Group

If you are interested in doing research in your school a new 2 year rolling programme is starting on 16th October 2018, the second meeting is 20th November 2018. All of the sessions are Twilights. Cost for 2 years £300. There is an opportunity to publish your material or use as part of a Masters programme (additional time and costs will be involved in these options)

Book - now available



Our latest research book is now available on Amazon - search 'Developing a Finding Out Culture 2' Or use the link below. This is the result of Teachers in a range of settings evidencing research in their schools.

https://www.amazon.co.uk/dp/1722016485/ref=sr_1_fkmr0_1?ie=UTF8&qid=1532426310&sr=8-1-fkmr0&keywords=developing+a+finding+our+culture

School to School Support

If you would like assistance with SEN review or Pupil Premium review, please contact us.

Contact Details

If you have any questions or would like further information, please contact **Debra Ward**, Teaching School Lead debraw@ridgeway.surrey.sch.uk or phone **01252 724562**